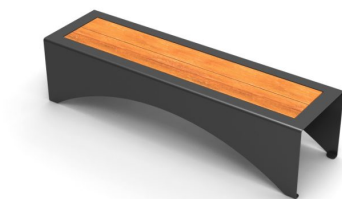


# BENCHES: PAPER WPC



| Categories: [BENCHES](#), [URBAN DESIGN](#)

## PRODUCT DESCRIPTION

Designer: [Hangar Design Group](#)

The load-bearing structure of the bench PAPER WPC is made in steel sheet, 60/10 thickness, and shapes its feet and seat. In the middle of the seat there are 2 slats in WPC (dimensions: 1580x160x22mm) supported by 3 elements, welded under the load-bearing structure, made in steel sheet of 50/10 thickness, and provided with holes for the fixing of the slats with specific bolts. The bench can be fixed to the ground through specific bolts (not provided) to be used on 4 holes (11 mm diam.) present on the feet.

For the realization of this product made in Italy, Steel EN10111DD11 is used and later treated with a cycle of sandblasting, cataphoresis and powder coating. Such cycle is meant to guarantee the protection of the painted products, in an environment of C4 corrosion class, as requested by the UNI regulations EN ISO 12944-2. The products are eventually polyester-powder coated with RAL colours at choice.

As an alternative to steel EN10111DD11, the production in corten is also available, on demand. In this case the material is treated with a specific oxidation process.

The WPC (Wood Plastic Composite) material is made of 70% recycled wood and 30% recycled plastic.

### Max dimensions:

Height seat: **450 mm**  
Length: **1800 mm**  
Width seat: **500 mm**  
Weight of the steel: **66 kg**

Materials: [steel and WPC](#)

