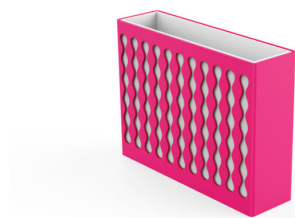


PLANTERS: MULTIPLICITY SLIM



| Categories: [PLANTERS](#), [URBAN DESIGN](#)

PRODUCT DESCRIPTION

Designer: [Karim Rashid](#)

The planter is made of 2 elements made in steel sheet, each one placed inside the other. Both the outer decorative part and the inner tray are the result of steel sheets of 40/10 thickness with a bottom of 20/10 thickness. On the bottom of the planter there is a drain pipe of 40 mm height, resulting from a tube 15X15x1,5mm.

This product is entirely made in Italy from steel subjected to an electrolytic galvanising cycle and subsequently painted with PP powders with Ral colour of your choice.

Max Dimensions:

Height: **512,5 mm**

Width: **191 mm**

Length: **685 mm**

Capacity: **50 lt**

Weight: **49 kg**

Material: [steel](#)



GALLERY IMAGES

